



GMT MONTHLY MEMBERSHIP PROGRESS REPORT

Results as of: 12/31/2023

Multiple District 105

LOCATION: ENGLAND

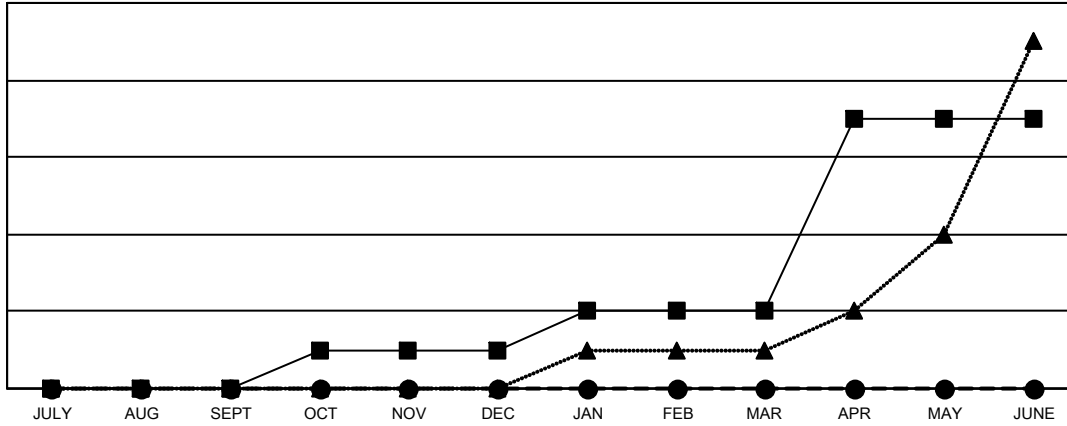
GMT: OPEN

GMT CA 4

| Clubs | | | |
|-----------------------|---------------|-----------|---------------|
| RESULTS FOR 2023-2024 | | | |
| QUARTER | NEW CLUB GOAL | NEW CLUBS | DROPPED CLUBS |
| JULY/AUG/SEPT | 0 | 0 | 4 |
| OCT/NOV/DEC | 1 | 0 | 2 |
| JAN/FEB/MAR | 1 | 0 | 0 |
| APR/MAY/JUNE | 5 | 0 | 0 |

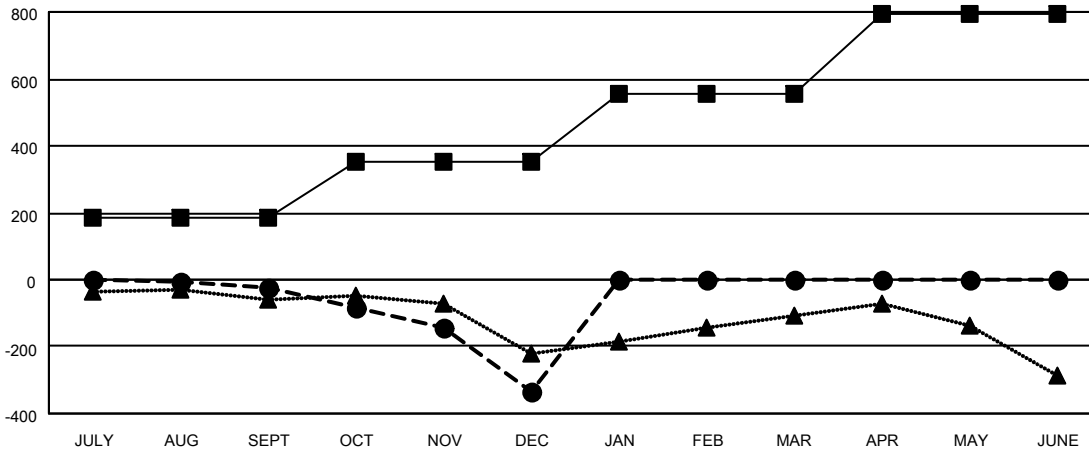
| Members | | | |
|-----------------------|------------------------|----------------------|--|
| RESULTS FOR 2023-2024 | | | |
| QUARTER | MEMBER GROWTH NET GOAL | MEMBER GROWTH ACTUAL | DROPPED MEMBERS ACTUAL (including transfers) |
| JULY/AUG/SEPT | 187 | 255 | 241 |
| OCT/NOV/DEC | 163 | 205 | 477 |
| JAN/FEB/MAR | 207 | 0 | 0 |
| APR/MAY/JUNE | 238 | 0 | 0 |

GOALS AND ACTUAL NEW CLUBS CUMULATIVE



- - CURRENT YEAR GOALS FOR NEW CLUBS
- - CURRENT YEAR ACTUAL NEW CLUBS
- ▲ - LAST YEAR ACTUAL NEW CLUBS

GOALS AND ACTUAL MEMBERS CUMULATIVE



- - MEMBER GROWTH NET GOAL
- - MEMBER GROWTH ACTUAL
- ▲ - LAST YEAR MEMBERSHIP ACTUAL

| | | |
|------------------------|---|-------------------------------------|
| DROPPED CLUBS: 6 | 203 CLUBS OF 564 ADDED 1 OR MORE NEW MEMBERS | GENDER DISTRIBUTION |
| | | MALE 6,572 (68.97%) |
| | | FEMALE 2,957 (31.03%) |
| DROPPED MEMBERS | CLICK HERE FOR CUMULATIVE MEMBERSHIP DATA | TOTAL FAMILY UNIT MEMBERS 1,283 |
| DECEASED 102 | | FAMILY MEMBERS PAYING HALF DUES 653 |
| CLUB CANCELLED 2 | | |
| OTHER 614 | | |
| TOTAL 718 | | |